



# STB11NM80 - STF11NM80 STP11NM80 - STW11NM80

N-channel 800 V - 0.35  $\Omega$  - 11 A - TO-220/FP- D<sup>2</sup>PAK - TO-247  
MDmesh™ Power MOSFET

## Features

| Type      | V <sub>DSS</sub> | R <sub>DS(on)</sub> | R <sub>DS(on)</sub> *Q <sub>g</sub> | I <sub>D</sub> |
|-----------|------------------|---------------------|-------------------------------------|----------------|
| STB11NM80 | 800 V            | < 0.40 $\Omega$     | 14 $\Omega$ *nC                     | 11 A           |
| STF11NM80 | 800 V            | < 0.40 $\Omega$     | 14 $\Omega$ *nC                     | 11 A           |
| STP11NM80 | 800 V            | < 0.40 $\Omega$     | 14 $\Omega$ *nC                     | 11 A           |
| STW11NM80 | 800 V            | < 0.40 $\Omega$     | 14 $\Omega$ *nC                     | 11 A           |

- Low input capacitance and gate charge
- Low gate input resistance
- Best R<sub>DS(on)</sub>\*Q<sub>g</sub> in the industry

## Application

- Switching applications

## Description

The MDmesh™ associates the multiple drain process with the Company's PowerMesh™ horizontal layout assuring an outstanding low on-resistance. The adoption of the Company's proprietary strip technique yields overall dynamic performance that is significantly better than that of similar competition's products.

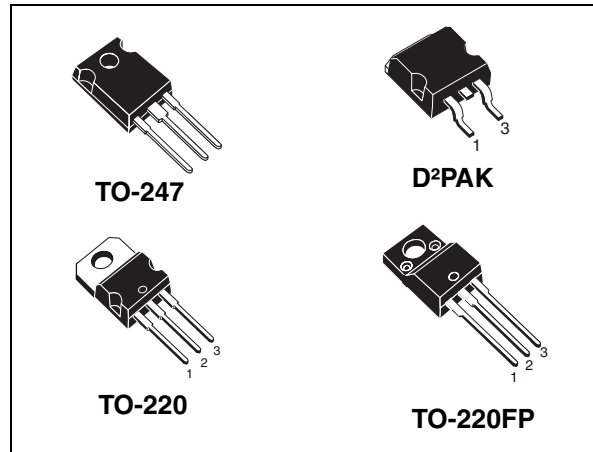


Figure 1. Internal schematic diagram

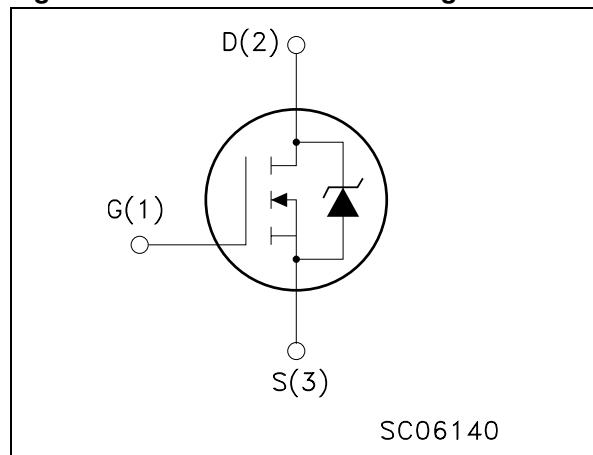


Table 1. Device summary

| Order codes | Marking | Package            | Packaging   |
|-------------|---------|--------------------|-------------|
| STB11NM80   | B11NM80 | D <sup>2</sup> PAK | Tape & reel |
| STF11NM80   | F11NM80 | TO-220FP           | Tube        |
| STP11NM80   | P11NM80 | TO-220             | Tube        |
| STW11NM80   | W11NM80 | TO-247             | Tube        |

# Contents

|          |   |           |
|----------|---|-----------|
| <b>1</b> | <b>Electrical ratings</b> .....               | <b>3</b>  |
| <b>2</b> | <b>Electrical characteristics</b> .....       | <b>4</b>  |
|          | 2.1 Electrical characteristics (curves) ..... | 6         |
| <b>3</b> | <b>Test circuit</b> .....                     | <b>9</b>  |
| <b>4</b> | <b>Package mechanical data</b> .....          | <b>10</b> |
| <b>5</b> | <b>Packaging mechanical data</b> .....        | <b>15</b> |
| <b>6</b> | <b>Revision history</b> .....                 | <b>16</b> |

# 1 Electrical ratings

**Table 2. Absolute maximum ratings**

| Symbol                             | Parameter   | Value                                |                   | Unit |
|------------------------------------|---|--------------------------------------|-------------------|------|
|                                    |   | TO-220/D <sup>2</sup> PAK/<br>TO-247 | TO-220FP          |      |
| V <sub>DS</sub>                    | Drain-source voltage (V <sub>GS</sub> = 0)            | 800                                  |                   | V    |
| V <sub>GS</sub>                    | Gate-source voltage                                   | ±30                                  |                   | V    |
| I <sub>D</sub>                     | Drain current (continuous) at T <sub>C</sub> = 25°C   | 11                                   | 11 <sup>(1)</sup> | A    |
| I <sub>D</sub>                     | Drain current (continuous) at T <sub>C</sub> =100°C   | 8                                    | 8 <sup>(1)</sup>  | A    |
| I <sub>DM</sub> <sup>(2)</sup>     | Drain current (pulsed)                                | 44                                   | 44 <sup>(1)</sup> | A    |
| P <sub>TOT</sub>                   | Total dissipation at T <sub>C</sub> = 25°C            | 150                                  | 35                | W    |
|                                    | Derating factor                                       | 1.2                                  | 0.28              | W/°C |
| V <sub>ISO</sub>                   | Insulation withstand voltage (DC)                     | --                                   | 2500              | V    |
| T <sub>J</sub><br>T <sub>stg</sub> | Operating junction temperature<br>Storage temperature | -65 to 150                           |                   | °C   |

1. Limited only by the maximum temperature allowed
2. Pulse width limited by safe operating area

**Table 3. Thermal data**

| Symbol                | Parameter                                      | Value                                |          | Unit |
|-----------------------|--|--------------------------------------|----------|------|
|                       |  | TO-220/D <sup>2</sup> PAK/<br>TO-247 | TO-220FP |      |
| R <sub>thj-case</sub> | Thermal resistance junction-case max           | 0.83                                 | 3.6      | °C/W |
| R <sub>thj-a</sub>    | Thermal resistance junction-ambient max        | 62.5                                 |          | °C/W |
| T <sub>l</sub>        | Maximum lead temperature for soldering purpose | 300                                  |          | °C   |

**Table 4. Avalanche characteristics**

| Symbol          | Parameter  | Value | Unit |
|-----------------|--|-------|------|
| I <sub>AS</sub> | Avalanche current, repetitive or not-repetitive (pulse width limited by T <sub>J</sub> Max)                            | 2.5   | A    |
| E <sub>AS</sub> | Single pulse avalanche energy (starting T <sub>J</sub> =25°C, I <sub>d</sub> =I <sub>ar</sub> , V <sub>dd</sub> =50 V) | 400   | mJ   |

## 2 Electrical characteristics

( $T_{CASE}=25^{\circ}C$  unless otherwise specified)

**Table 5. On/off states**

| Symbol        | Parameter  | Test conditions  | Min. | Typ. | Max.      | Unit               |
|---------------|--|--|------|------|-----------|--------------------|
| $V_{(BR)DSS}$ | Drain-source breakdown voltage                   | $I_D = 250 \mu A, V_{GS} = 0$  | 800  |      |           | V                  |
| $I_{DSS}$     | Zero gate voltage drain current ( $V_{GS} = 0$ ) | $V_{DS} = \text{Max rating},$<br>$V_{DS} = \text{Max rating} @ 125^{\circ}C$ |      |      | 10<br>100 | $\mu A$<br>$\mu A$ |
| $I_{GSS}$     | Gate body leakage current ( $V_{DS} = 0$ )       | $V_{GS} = \pm 30 V$  |      |      | 100       | nA                 |
| $V_{GS(th)}$  | Gate threshold voltage                           | $V_{DS} = V_{GS}, I_D = 250 \mu A$   | 3    | 4    | 5         | V                  |
| $R_{DS(on)}$  | Static drain-source on resistance                | $V_{GS} = 10 V, I_D = 5.5 A$   |      | 0.35 | 0.40      | $\Omega$           |

**Table 6. Dynamic**

| Symbol  | Parameter   | Test conditions  | Min. | Typ.                 | Max. | Unit                 |
|---|---|--|------|----------------------|------|----------------------|
| $g_{fs}^{(1)}$                                | Forward transconductance  | $V_{DS} > I_{D(on)} \times R_{DS(on)max},$<br>$I_D = 7.5 A$                            |      | 8                    |      | S                    |
| $C_{iss}$<br>$C_{oss}$<br>$C_{rss}$           | Input capacitance<br>Output capacitance<br>Reverse transfer capacitance | $V_{DS} = 25 V, f = 1 \text{ MHz},$<br>$V_{GS} = 0$                                    |      | 1630<br>750<br>30    |      | pF<br>pF<br>pF       |
| $Q_g$<br>$Q_{gs}$<br>$Q_{gd}$                 | Total gate charge<br>Gate-source charge<br>Gate-drain charge            | $V_{DD} = 640 V, I_D = 11 A$<br>$V_{GS} = 10 V$<br>(see Figure 10)                     |      | 43.6<br>11.6<br>21   |      | nC<br>nC<br>nC       |
| $R_g$   | Gate input resistance   | $f = 1 \text{ MHz}$ Gate DC Bias = 0<br>Test signal level = 20 mV<br>Open drain        |      | 2.7                  |      | $\Omega$             |
| $t_{d(on)}$<br>$t_r$<br>$t_{d(off)}$<br>$t_f$ | Turn-on delay time<br>Rise time<br>Turn-off delay time<br>Fall time     | $V_{DD} = 400 V, I_D = 5.5 A,$<br>$R_G = 4.7 \Omega, V_{GS} = 10 V$<br>(see Figure 17) |      | 22<br>17<br>46<br>15 |      | ns<br>ns<br>ns<br>ns |

1. Pulsed: pulse duration = 300  $\mu s$ , duty cycle 1.5%

**Table 7. Source drain diode**

| Symbol          | Parameter                     | Test conditions  | Min | Typ.  | Max  | Unit          |
|-----------------|-------------------------------|--|-----|-------|------|---------------|
| $I_{SD}$        | Source-drain current          |  |     |       | 11   | A             |
| $I_{SDM}^{(1)}$ | Source-drain current (pulsed) |  |     |       | 44   | A             |
| $V_{SD}^{(2)}$  | Forward on voltage            | $I_{SD}=11\text{ A}$ , $V_{GS}=0$  |     |       | 0.86 | V             |
| $t_{rr}$        | Reverse recovery time         | $I_{SD}=11\text{ A}$ ,<br>$di/dt = 100\text{ A}/\mu\text{s}$ ,<br>$V_{DD}=50\text{ V}$ , $T_j=25\text{ }^\circ\text{C}$  |     | 612   |      | ns            |
| $Q_{rr}$        | Reverse recovery charge       |  |     | 7.22  |      | $\mu\text{C}$ |
| $I_{RRM}$       | Reverse recovery current      |  |     | 23.6  |      | A             |
| $t_{rr}$        | Reverse recovery time         | $I_{SD}=11\text{ A}$ ,<br>$di/dt = 100\text{ A}/\mu\text{s}$ ,<br>$V_{DD}=50\text{ V}$ , $T_j=150\text{ }^\circ\text{C}$ |     | 970   |      | ns            |
| $Q_{rr}$        | Reverse recovery charge       |  |     | 11.25 |      | $\mu\text{C}$ |
| $I_{RRM}$       | Reverse recovery current      |  |     | 23.2  |      | A             |

1. Pulse width limited by safe operating area
2. Pulsed: pulse duration=300 $\mu\text{s}$ , duty cycle 1.5%

## 2.1 Electrical characteristics (curves)

Figure 2. Safe operating area for TO-220 / D<sup>2</sup>PAK / TO-247

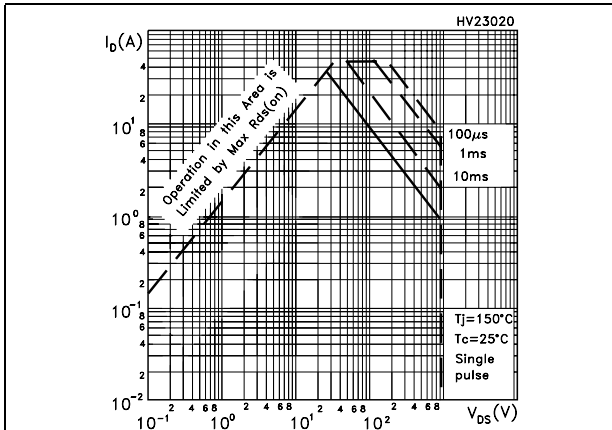


Figure 3. Thermal impedance for TO-220 / D<sup>2</sup>PAK / TO-247

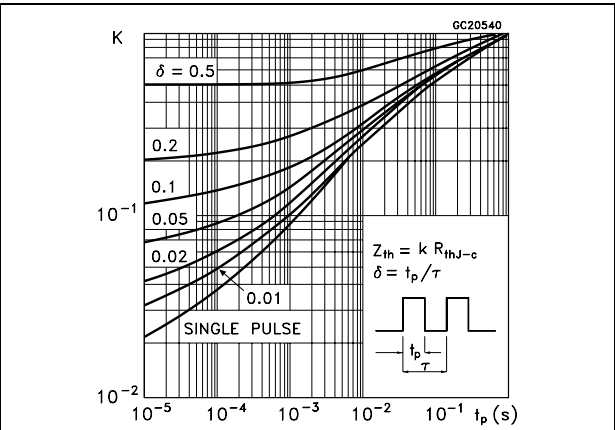


Figure 4. Safe operating area for TO-220FP

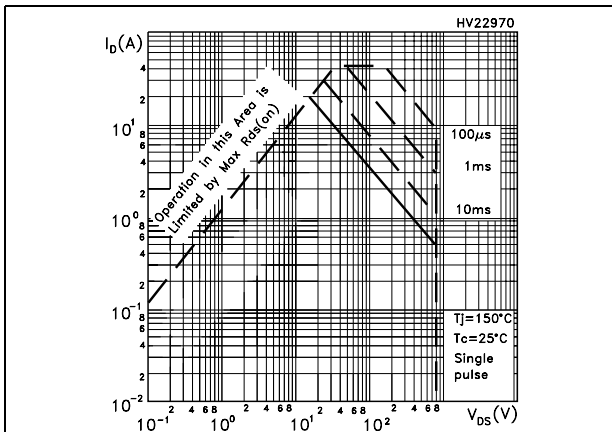


Figure 5. Thermal impedance for TO-220FP

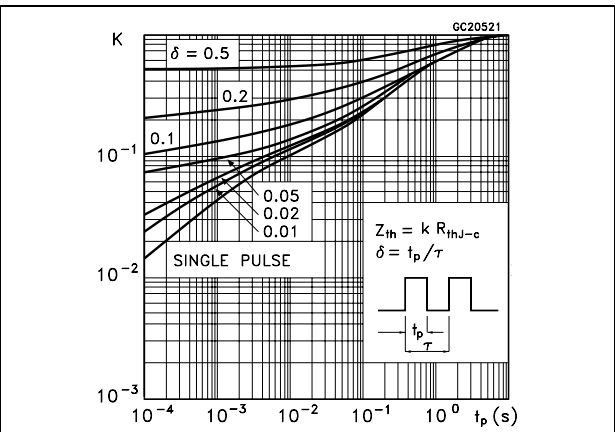


Figure 6. Output characteristics

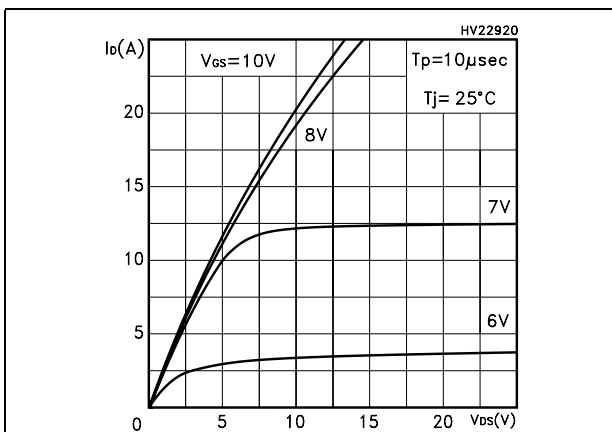


Figure 7. Output characteristics

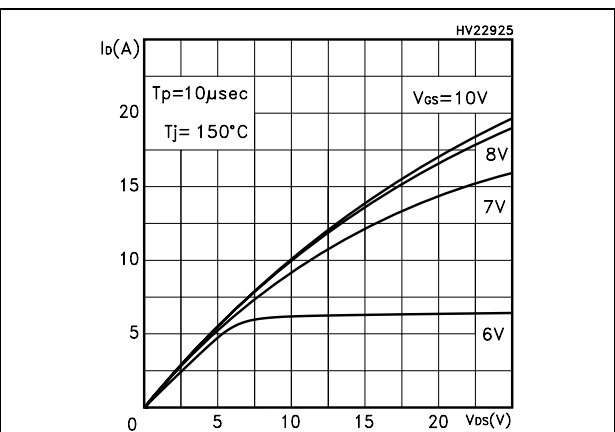


Figure 8. Transfer characteristics

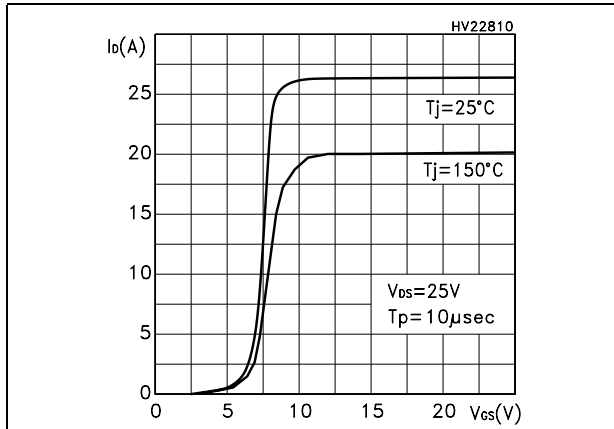


Figure 9. Transconductance

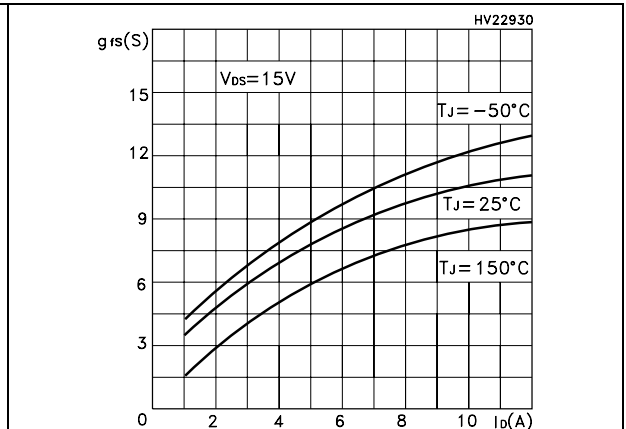


Figure 10. Gate charge vs gate-source voltage

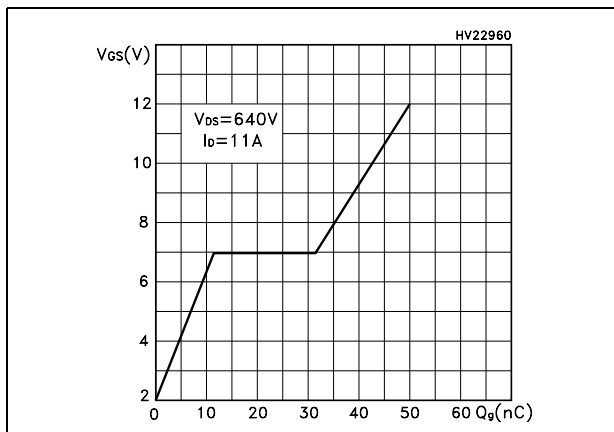


Figure 11. Capacitance variations

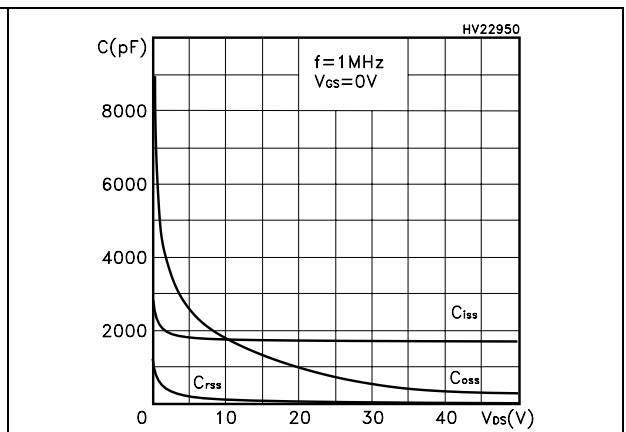


Figure 12. Normalized gate threshold voltage vs temperature

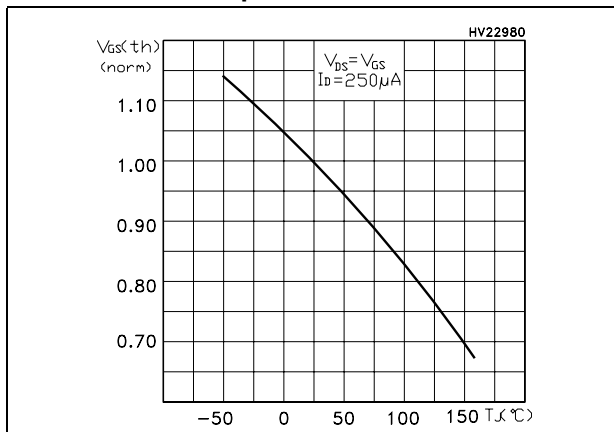


Figure 13. Static drain-source on resistance

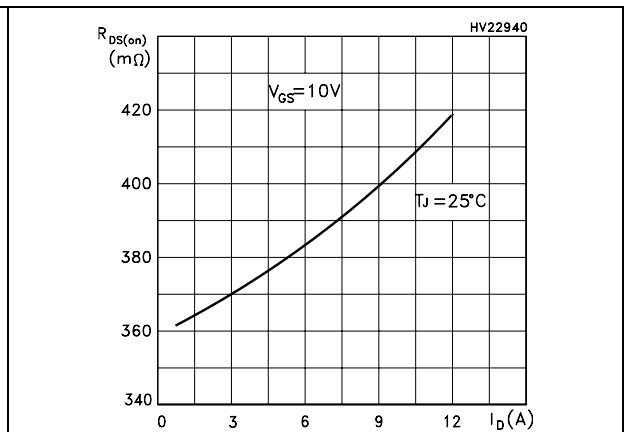


Figure 14. Source-drain diode forward characteristics

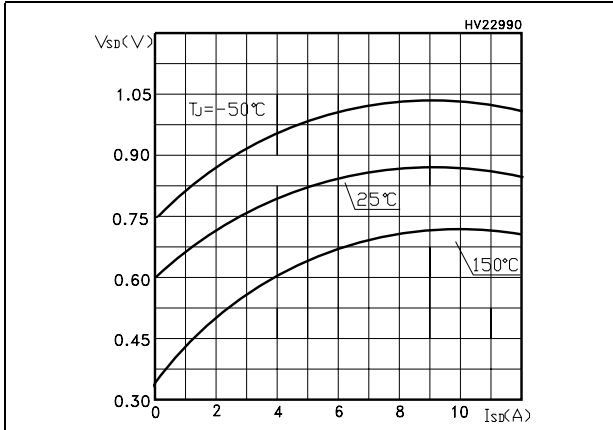


Figure 15. Normalized on resistance vs temperature

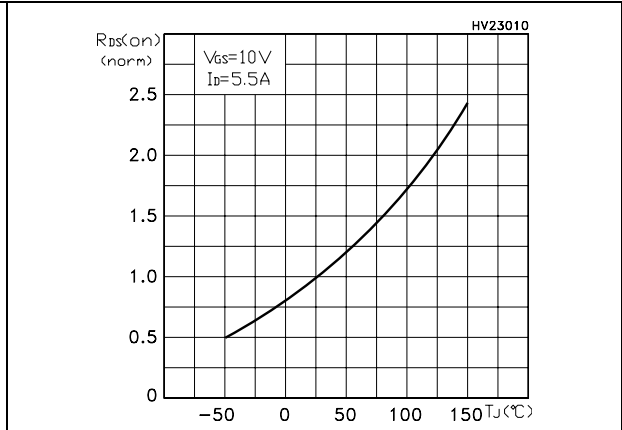
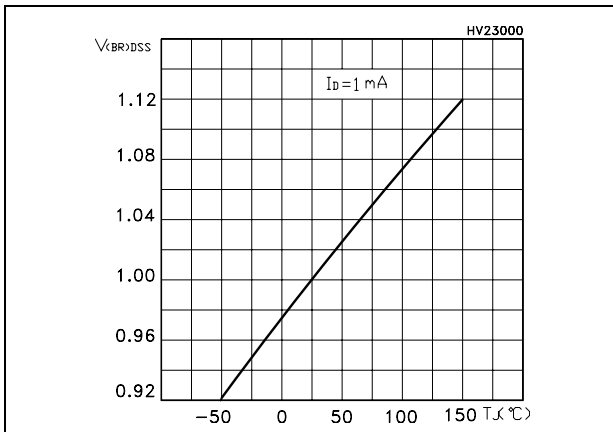


Figure 16. Normalized  $B_{VDSS}$  vs temperature





### 3 Test circuit

Figure 17. Switching times test circuit for resistive load



Figure 18. Gate charge test circuit



Figure 19. Test circuit for inductive load switching and diode recovery times



Figure 20. Unclamped inductive load test circuit



Figure 21. Unclamped inductive waveform



Figure 22. Switching time waveform

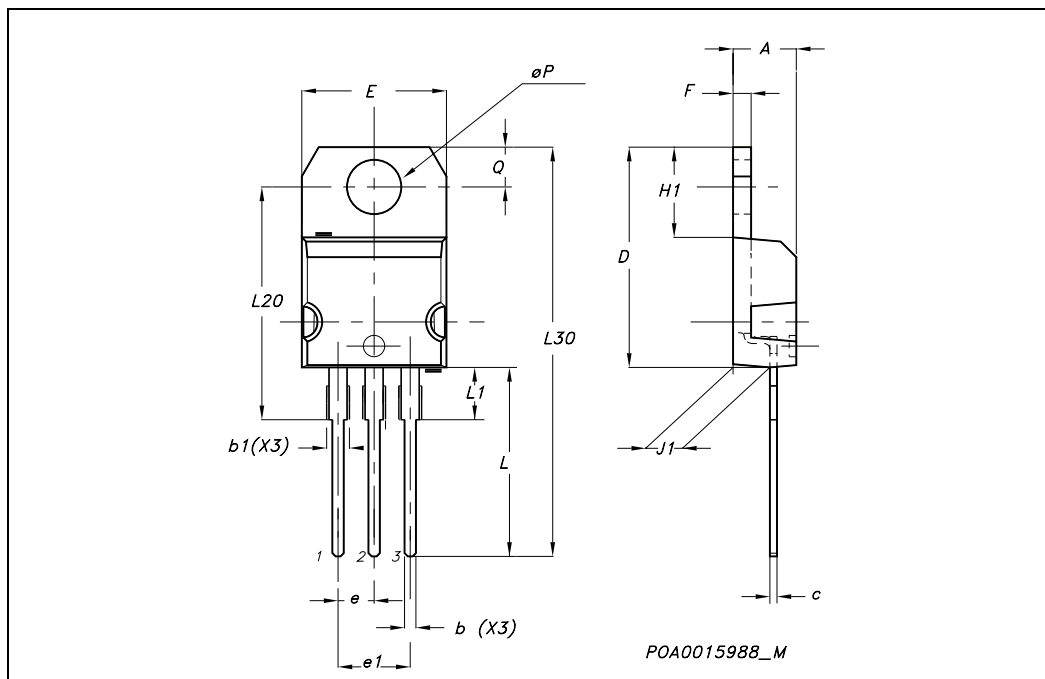


## 4 Package mechanical data

In order to meet environmental requirements, ST offers these devices in ECOPACK® packages. These packages have a Lead-free second level interconnect. The category of second level interconnect is marked on the package and on the inner box label, in compliance with JEDEC Standard JESD97. The maximum ratings related to soldering conditions are also marked on the inner box label. ECOPACK is an ST trademark. ECOPACK specifications are available at: [www.st.com](http://www.st.com)

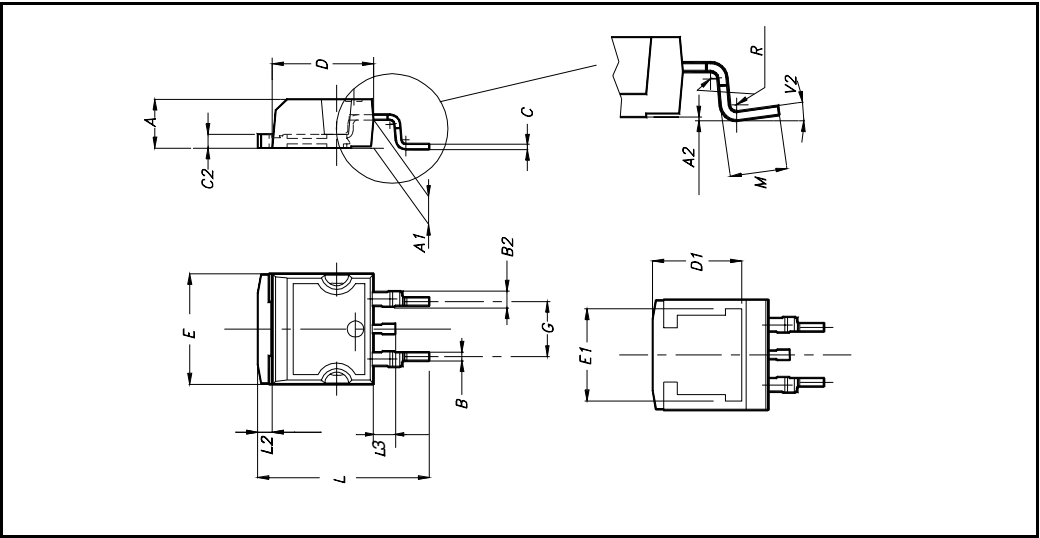
**TO-220 MECHANICAL DATA**

| DIM. | mm.   |       |       | inch  |       |       |
|------|-------|-------|-------|-------|-------|-------|
|      | MIN.  | TYP.  | MAX.  | MIN.  | TYP.  | MAX.  |
| A    | 4.40  |       | 4.60  | 0.173 |       | 0.181 |
| b    | 0.61  |       | 0.88  | 0.024 |       | 0.034 |
| b1   | 1.15  |       | 1.70  | 0.045 |       | 0.066 |
| c    | 0.49  |       | 0.70  | 0.019 |       | 0.027 |
| D    | 15.25 |       | 15.75 | 0.60  |       | 0.620 |
| E    | 10    |       | 10.40 | 0.393 |       | 0.409 |
| e    | 2.40  |       | 2.70  | 0.094 |       | 0.106 |
| e1   | 4.95  |       | 5.15  | 0.194 |       | 0.202 |
| F    | 1.23  |       | 1.32  | 0.048 |       | 0.052 |
| H1   | 6.20  |       | 6.60  | 0.244 |       | 0.256 |
| J1   | 2.40  |       | 2.72  | 0.094 |       | 0.107 |
| L    | 13    |       | 14    | 0.511 |       | 0.551 |
| L1   | 3.50  |       | 3.93  | 0.137 |       | 0.154 |
| L20  |       | 16.40 |       |       | 0.645 |       |
| L30  |       | 28.90 |       |       | 1.137 |       |
| øP   | 3.75  |       | 3.85  | 0.147 |       | 0.151 |
| Q    | 2.65  |       | 2.95  | 0.104 |       | 0.116 |



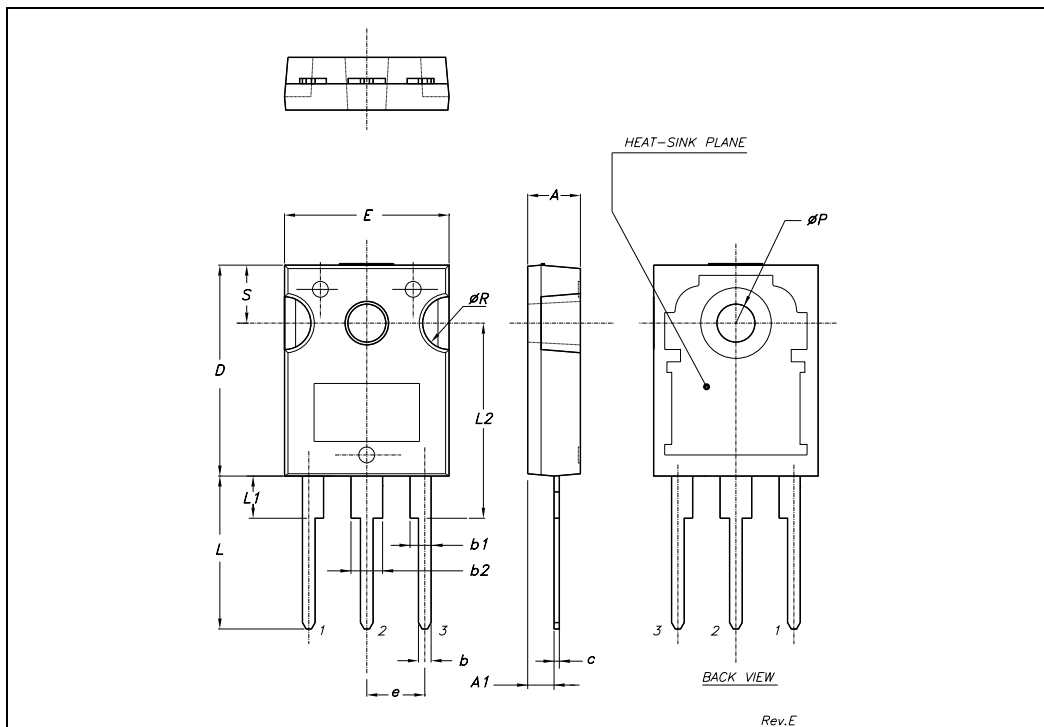
**D<sup>2</sup>PAK MECHANICAL DATA**

| DIM. | mm.  |     |       | inch  |       |       |
|------|------|-----|-------|-------|-------|-------|
|      | MIN. | TYP | MAX.  | MIN.  | TYP.  | MAX.  |
| A    | 4.4  |     | 4.6   | 0.173 |       | 0.181 |
| A1   | 2.49 |     | 2.69  | 0.098 |       | 0.106 |
| A2   | 0.03 |     | 0.23  | 0.001 |       | 0.009 |
| B    | 0.7  |     | 0.93  | 0.027 |       | 0.036 |
| B2   | 1.14 |     | 1.7   | 0.044 |       | 0.067 |
| C    | 0.45 |     | 0.6   | 0.017 |       | 0.023 |
| C2   | 1.23 |     | 1.36  | 0.048 |       | 0.053 |
| D    | 8.95 |     | 9.35  | 0.352 |       | 0.368 |
| D1   |      | 8   |       |       | 0.315 |       |
| E    | 10   |     | 10.4  | 0.393 |       |       |
| E1   |      | 8.5 |       |       | 0.334 |       |
| G    | 4.88 |     | 5.28  | 0.192 |       | 0.208 |
| L    | 15   |     | 15.85 | 0.590 |       | 0.625 |
| L2   | 1.27 |     | 1.4   | 0.050 |       | 0.055 |
| L3   | 1.4  |     | 1.75  | 0.055 |       | 0.068 |
| M    | 2.4  |     | 3.2   | 0.094 |       | 0.126 |
| R    |      | 0.4 |       |       | 0.015 |       |
| V2   | 0°   |     | 4°    |       |       |       |



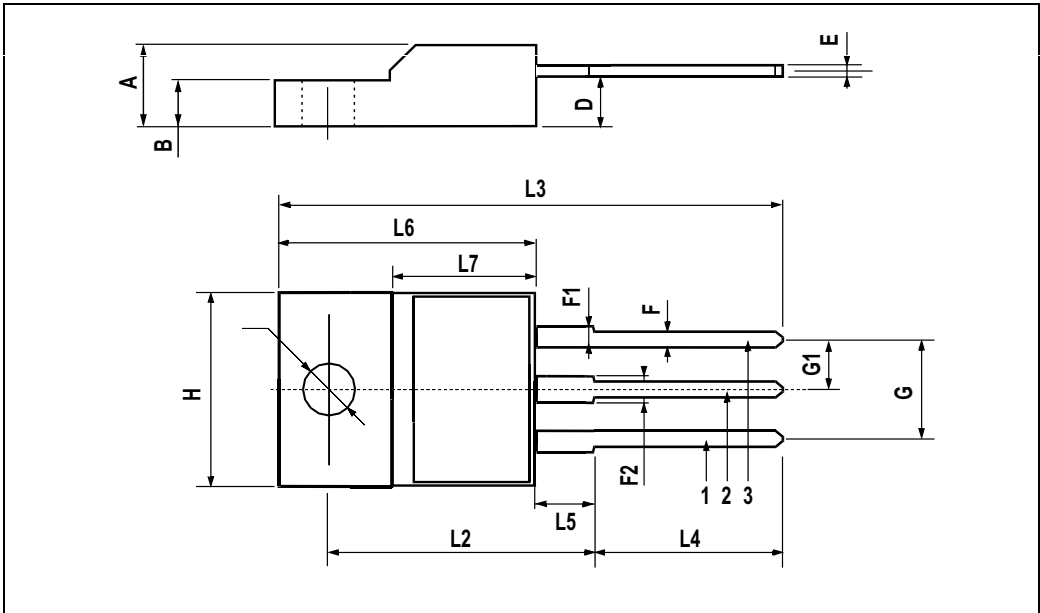
**TO-247 MECHANICAL DATA**

| DIM. | mm.   |       |       | inch  |       |       |
|------|-------|-------|-------|-------|-------|-------|
|      | MIN.  | TYP.  | MAX.  | MIN.  | TYP.  | MAX.  |
| A    | 4.85  |       | 5.15  | 0.19  |       | 0.20  |
| A1   | 2.20  |       | 2.60  | 0.086 |       | 0.102 |
| b    | 1.0   |       | 1.40  | 0.039 |       | 0.055 |
| b1   | 2.0   |       | 2.40  | 0.079 |       | 0.094 |
| b2   | 3.0   |       | 3.40  | 0.118 |       | 0.134 |
| c    | 0.40  |       | 0.80  | 0.015 |       | 0.03  |
| D    | 19.85 |       | 20.15 | 0.781 |       | 0.793 |
| E    | 15.45 |       | 15.75 | 0.608 |       | 0.620 |
| e    |       | 5.45  |       |       | 0.214 |       |
| L    | 14.20 |       | 14.80 | 0.560 |       | 0.582 |
| L1   | 3.70  |       | 4.30  | 0.14  |       | 0.17  |
| L2   |       | 18.50 |       |       | 0.728 |       |
| øP   | 3.55  |       | 3.65  | 0.140 |       | 0.143 |
| øR   | 4.50  |       | 5.50  | 0.177 |       | 0.216 |
| S    |       | 5.50  |       |       | 0.216 |       |



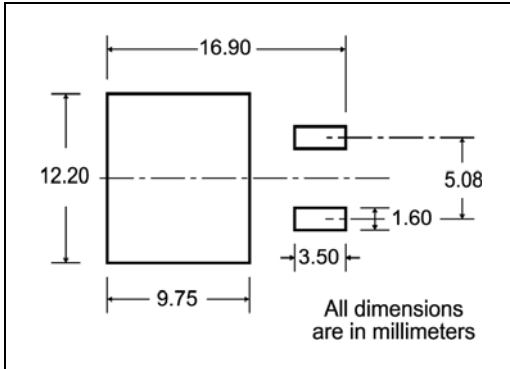
**TO-220FP MECHANICAL DATA**

| DIM. | mm.  |     |      | inch  |       |       |
|------|------|-----|------|-------|-------|-------|
|      | MIN. | TYP | MAX. | MIN.  | TYP.  | MAX.  |
| A    | 4.4  |     | 4.6  | 0.173 |       | 0.181 |
| B    | 2.5  |     | 2.7  | 0.098 |       | 0.106 |
| D    | 2.5  |     | 2.75 | 0.098 |       | 0.108 |
| E    | 0.45 |     | 0.7  | 0.017 |       | 0.027 |
| F    | 0.75 |     | 1    | 0.030 |       | 0.039 |
| F1   | 1.15 |     | 1.7  | 0.045 |       | 0.067 |
| F2   | 1.15 |     | 1.7  | 0.045 |       | 0.067 |
| G    | 4.95 |     | 5.2  | 0.195 |       | 0.204 |
| G1   | 2.4  |     | 2.7  | 0.094 |       | 0.106 |
| H    | 10   |     | 10.4 | 0.393 |       | 0.409 |
| L2   |      | 16  |      |       | 0.630 |       |
| L3   | 28.6 |     | 30.6 | 1.126 |       | 1.204 |
| L4   | 9.8  |     | 10.6 | .0385 |       | 0.417 |
| L5   | 2.9  |     | 3.6  | 0.114 |       | 0.141 |
| L6   | 15.9 |     | 16.4 | 0.626 |       | 0.645 |
| L7   | 9    |     | 9.3  | 0.354 |       | 0.366 |
| Ø    | 3    |     | 3.2  | 0.118 |       | 0.126 |



## 5 Packaging mechanical data

### D<sup>2</sup>PAK FOOTPRINT



### TAPE AND REEL SHIPMENT

40 mm min. Access hole at slot location

Full radius

Tape slot in core for tape start

25mm min. width

#### REEL MECHANICAL DATA

| DIM. | mm   |      | inch  |        |
|------|------|------|-------|--------|
|      | MIN. | MAX. | MIN.  | MAX.   |
| A    |      | 330  |       | 12.992 |
| B    | 1.5  |      | 0.059 |        |
| C    | 12.8 | 13.2 | 0.504 | 0.520  |
| D    | 20.2 |      | 0.795 |        |
| G    | 24.4 | 26.4 | 0.960 | 1.039  |
| N    | 100  |      | 3.937 |        |
| T    |      | 30.4 |       | 1.197  |

| BASE QTY | BULK QTY |
|----------|----------|
| 1000     | 1000     |

#### TAPE MECHANICAL DATA

| DIM. | mm   |      | inch   |        |
|------|------|------|--------|--------|
|      | MIN. | MAX. | MIN.   | MAX.   |
| A0   | 10.5 | 10.7 | 0.413  | 0.421  |
| B0   | 15.7 | 15.9 | 0.618  | 0.626  |
| D    | 1.5  | 1.6  | 0.059  | 0.063  |
| D1   | 1.59 | 1.61 | 0.062  | 0.063  |
| E    | 1.65 | 1.85 | 0.065  | 0.073  |
| F    | 11.4 | 11.6 | 0.449  | 0.456  |
| K0   | 4.8  | 5.0  | 0.189  | 0.197  |
| P0   | 3.9  | 4.1  | 0.153  | 0.161  |
| P1   | 11.9 | 12.1 | 0.468  | 0.476  |
| P2   | 1.9  | 2.1  | 0.075  | 0.082  |
| R    | 50   |      | 1.574  |        |
| T    | 0.25 | 0.35 | 0.0098 | 0.0137 |
| W    | 23.7 | 24.3 | 0.933  | 0.956  |

10 pitches cumulative tolerance on tape +/- 0.2 mm

Center line of cavity

User Direction of Feed

TRL

FEED DIRECTION

Bending radius R min.

\* on sales type

## 6 Revision history

**Table 8. Revision history**

| Date        | Revision | Changes  |
|-------------|----------|--|
| 30-Sep-2004 | 4        | Preliminary version  |
| 26-Nov-2005 | 5        | Complete version   |
| 07-Apr-2006 | 6        | Modified value on <a href="#">Figure 8</a>                               |
| 15-May-2006 | 7        | New dv/dt value on <a href="#">Table 5</a>                               |
| 20-Jul-2006 | 8        | The document has been reformatted  |
| 20-Dec-2007 | 9        | Updated $I_D$ value on <a href="#">Table 2: Absolute maximum ratings</a> |



**Please Read Carefully:**

Information in this document is provided solely in connection with ST products. STMicroelectronics NV and its subsidiaries ("ST") reserve the right to make changes, corrections, modifications or improvements, to this document, and the products and services described herein at any time, without notice.

All ST products are sold pursuant to ST's terms and conditions of sale.

Purchasers are solely responsible for the choice, selection and use of the ST products and services described herein, and ST assumes no liability whatsoever relating to the choice, selection or use of the ST products and services described herein.

No license, express or implied, by estoppel or otherwise, to any intellectual property rights is granted under this document. If any part of this document refers to any third party products or services it shall not be deemed a license grant by ST for the use of such third party products or services, or any intellectual property contained therein or considered as a warranty covering the use in any manner whatsoever of such third party products or services or any intellectual property contained therein.

**UNLESS OTHERWISE SET FORTH IN ST'S TERMS AND CONDITIONS OF SALE ST DISCLAIMS ANY EXPRESS OR IMPLIED WARRANTY WITH RESPECT TO THE USE AND/OR SALE OF ST PRODUCTS INCLUDING WITHOUT LIMITATION IMPLIED WARRANTIES OF MERCHANTABILITY, FITNESS FOR A PARTICULAR PURPOSE (AND THEIR EQUIVALENTS UNDER THE LAWS OF ANY JURISDICTION), OR INFRINGEMENT OF ANY PATENT, COPYRIGHT OR OTHER INTELLECTUAL PROPERTY RIGHT.**

**UNLESS EXPRESSLY APPROVED IN WRITING BY AN AUTHORIZED ST REPRESENTATIVE, ST PRODUCTS ARE NOT RECOMMENDED, AUTHORIZED OR WARRANTED FOR USE IN MILITARY, AIR CRAFT, SPACE, LIFE SAVING, OR LIFE SUSTAINING APPLICATIONS, NOR IN PRODUCTS OR SYSTEMS WHERE FAILURE OR MALFUNCTION MAY RESULT IN PERSONAL INJURY, DEATH, OR SEVERE PROPERTY OR ENVIRONMENTAL DAMAGE. ST PRODUCTS WHICH ARE NOT SPECIFIED AS "AUTOMOTIVE GRADE" MAY ONLY BE USED IN AUTOMOTIVE APPLICATIONS AT USER'S OWN RISK.**

Resale of ST products with provisions different from the statements and/or technical features set forth in this document shall immediately void any warranty granted by ST for the ST product or service described herein and shall not create or extend in any manner whatsoever, any liability of ST.

ST and the ST logo are trademarks or registered trademarks of ST in various countries.

Information in this document supersedes and replaces all information previously supplied.

The ST logo is a registered trademark of STMicroelectronics. All other names are the property of their respective owners.

© 2007 STMicroelectronics - All rights reserved

STMicroelectronics group of companies

Australia - Belgium - Brazil - Canada - China - Czech Republic - Finland - France - Germany - Hong Kong - India - Israel - Italy - Japan - Malaysia - Malta - Morocco - Singapore - Spain - Sweden - Switzerland - United Kingdom - United States of America

[www.st.com](http://www.st.com)