

Safety Standard Approved Opto Isolators ON3171 Series

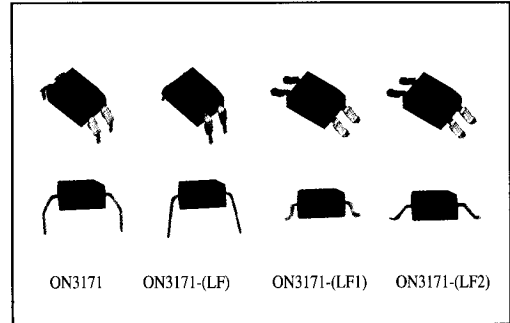
■ Features

- High current transfer ratio: CTR: 100~600%
- Isolation voltage: $V_{iso} > 5kV$
- High collector-emitter voltage: $V_{CEO} > 80V$
- Surface mounting type
- Overseas safety standard approved

■ Safety Standard Approved List

- UL approved
- VDE approved
- BSI applied
- SEMKO applied
- DEMKO applied
- NEMKO applied
- FIMKO applied
- CSA approved

■ Package photograph



■ Applications

- Programmable Controller(PC)
- Switching Supply, AC Adapter
- Telephone, Facsimile, PBX
- Isolated Signal Transmission

■ Electrical Characteristics($T_a = 25^\circ C$)

Parameter	Symbol	Test Condition	min	typ	max	Unit
Electrical Characteristics-Input Diode						
Forward Voltage	V_F	$I_F = 50mA$		1.35	1.5	V
Reverse Current	I_R	$V_R = 3V$			10	μA
Capacitance	C_i	$V_R = 0, f = 1MHz$		15		pF
Electrical Characteristics-Output Transistor						
Dark Current	I_{CEO}	$V_{CE} = 20V$		5	100	nA
Collector-Emitter Voltage	V_{CEO}	$I_C = 100 \mu A$	80			V
Emitter-Collector Voltage	V_{ECO}	$I_E = 10 \mu A$	7			V
Collector Capacitance	C_C	$V_{CE} = 10V, f = 1MHz$		10		pF
Electrical Characteristics-Coupled						
Current Transfer Ratio	CTR	$V_{CE} = 10V, I_F = 5mA$	100		600	%
Saturation Voltage	$V_{CE(sat)}$	$I_F = 20mA, I_C = 1mA$		0.1	0.2	V
Rise Time	t_r	$V_{CC} = 10V, I_C = 2mA$		2		μs
Fall Time	t_f	$R_L = 100 \Omega$		3		μs
Capacitance	C_{iso}	$f = 1MHz$		0.7		pF
Resistance	R_{iso}	$V_{iso} = 500V$	10^{11}			Ω

† The products and specifications are subject to change without any notice. Please ask for the latest Product Standards to guarantee the satisfaction of your product requirements.

Matsushita Electronics Corporation

1, Kotari Yakemachi, Nagaokakyo, Kyoto, 617-8520 Japan

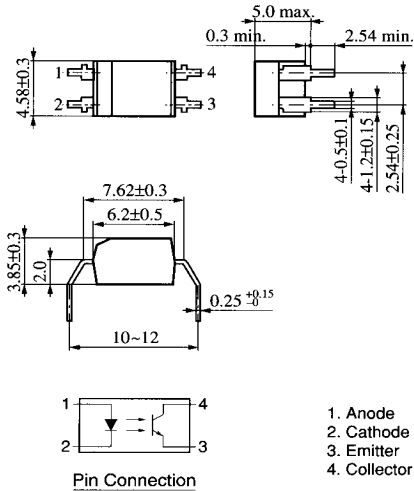
Tel. (075) 951-8151

<http://www.mec.panasonic.co.jp>

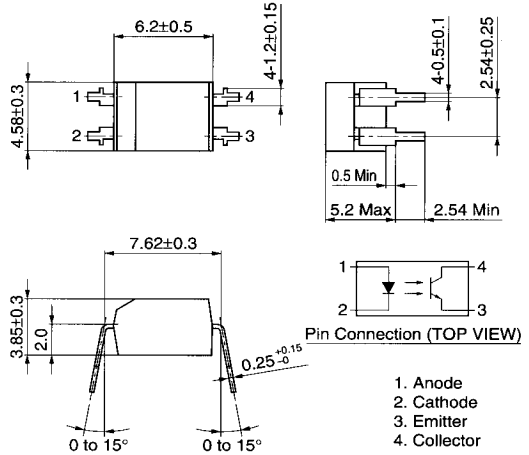
New publication, effective from May. 6 1998

D00322AE

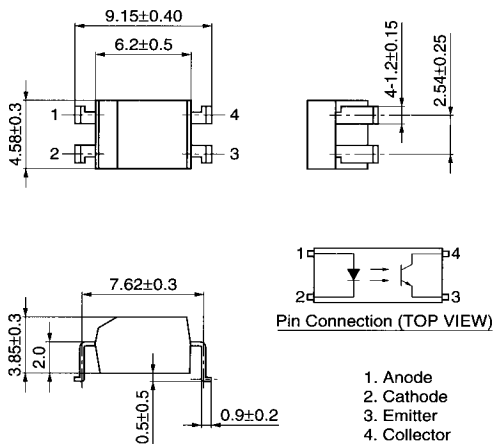
ON3171



ON3171-(LF)



ON3171-(LF1)



ON3171-(LF2)

